

## How to use Acer eRecovery Management

You can launch Acer eRecovery Management in a number of ways:

- By pressing the hotkey <Alt>+<F10> during the boot-up process, or at any time when you are running Microsoft Windows.
- From the Start menu, go to **Start>(All) Programs> Empowering Technology> Acer eRecovery Management**.
- By clicking on the Empowering Technology icon from your desktop, or pressing <e> key to launch the **Empowering Technology** user interface. Select the **Acer eRecovery Management** icon.



This will open the Acer eRecovery Management main page.



Note:

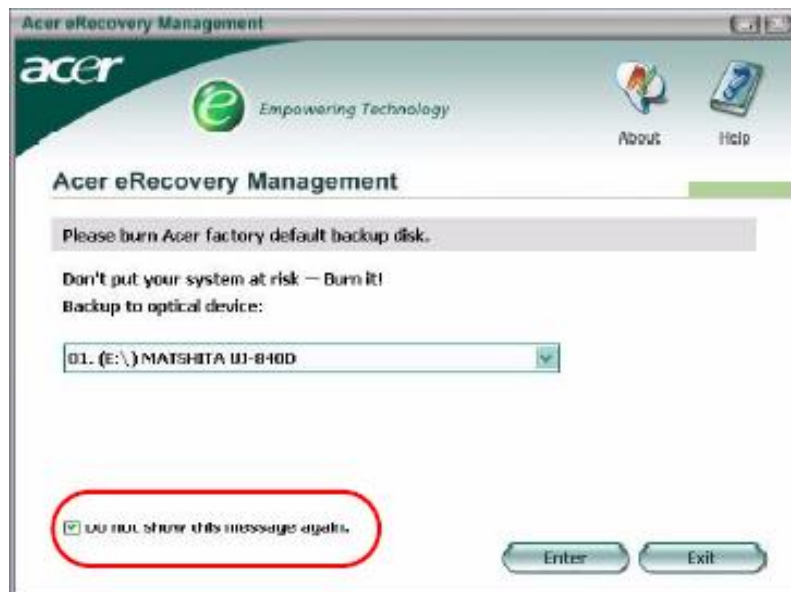
Acer eRecovery Management requires a password to activate. The default password is six zeros (0s).

## Reminder to burn factory image to disk

The First time you use Acer eRecovery Management, you are reminded to burn the factory image (from the hidden partition) to an optical disk.



Once the disks have been burned, or if you have checked the checkbox in the lower left-hand corner of the screen, the reminder is no longer shown.

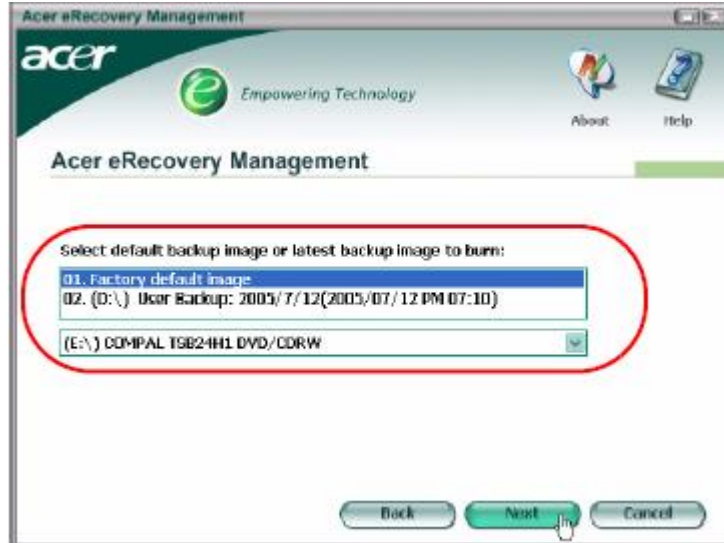


# How to Create Back-up Recovery CD from eRecovery

Step 1: Click on “Burn image to disk: Create Backup disk



Step 2 : You can select to burn any image stored on the HDD (Including the factory default image stored in the hidden partition) to an optical disk.



Step 3: The backup information is displayed, and you are requested to confirm the backup.



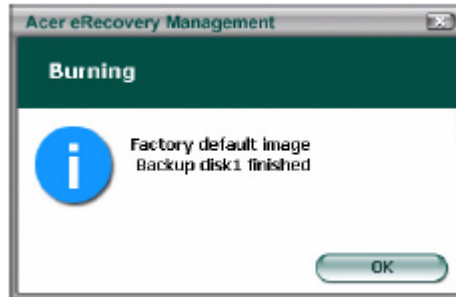
Step 4: As each disk filled, Acer eRecovery Management prompts you to insert the next blank disk.

Step 5: You are reminded to label each disk in sequence appropriately.

Step 6: Once the burning process starts, the keyboard and mouse are disabled to ensure system stability.



Step 7: Once the backup finished, or if the backup fails, a message is displayed.



Note : Recommended to use blank cd's for creating Recovery Disk